



Email: norwaylaon@gmail.com
Website: www.norwaylakes.org

Annual Meeting July 20 9:30am on Zoom
See last page for details

Lakes Association of Norway (LAON) - 2024 Newsletter

Our current challenge:

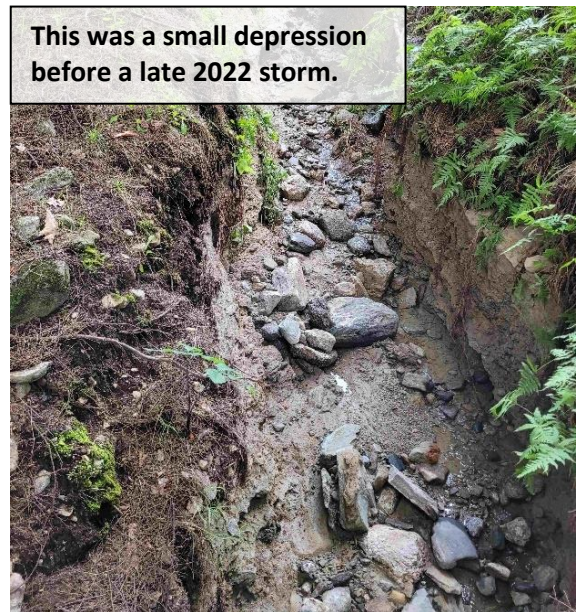
Ten years ago, lake scientists working with us accurately predicted that left unchecked, slow acting watershed erosion would eventually present an even greater danger to our lakes than invasive plants. Water runoff carries nutrients like phosphorus into our lakes promoting algae growth which can lead to oxygen depletion and greater lake harm. Unfortunately, water quality monitoring shows that our lakes, like most others, are seeing such effects.

As the summer of 2024 begins, we need to look back on recent turbulence. Since December of 2022, "hundred-year storms" struck a few times each year. At major stream crossings, culverts were overwhelmed, repaired, then hit again, carrying hundreds of tons of fill into our lakes. Large plumes of sediment were seen on both Pennesseewassee and Hobbs Pond following storms. A deep gully formed on private property after the 2022 storm which also brought tons of fill into Penn. Each subsequent storm eroded it even further. To make matters worse, last summer set the record for consecutive days of measurable precipitation, and 2023 had a significant increase in heavy rainfall events of more than 1" of rain. The saturated ground lost absorption capabilities which led to more polluting runoff. As in most of the Northeast, frequent and fierce heavy rains storms will continue to amplify erosion issues.

Two New Severe Erosion Sites



Yes, there was a road here! Has washed out a few times since 2022.



This was a small depression before a late 2022 storm.

LAON is working to meet the challenges presented by climate change and ***we hope you will be inspired to work with us.*** Confronting the challenges depends on individuals addressing their own property and road issues, and we can help! You will see that LAON is already working with property owners to address many of the most serious erosion issues. As we hope you know, LAON exists to protect and maintain the health and beauty of Norway's lakes. Read more about our accomplishments and plans below.

Water Quality Monitoring

Three of our lakes saw reduced phosphorus (P) in 2023, possibly due to heavy summer rains “flushing” the water, and thereby reducing concentrations. The exception was Lake Pennesseewassee, which experienced high P levels for the second year in a row, along with higher algal concentrations. It’s likely that increased flows and sediment from the flooding mentioned earlier contributed to its high P concentrations in both bottom and surface waters. On the bright side, cyanobacteria conditions in Hobbs Pond improved somewhat and P levels declined towards typical values. Sand Pond also had typical P values after somewhat higher numbers in 2022. North Pond had further improvement as P levels dropped to somewhat less than typical. **A chart comparing past and current levels is on the LAON website.**

LAON will continue its diligent monitoring of lake water quality each month from May to September. We will also do additional targeted monitoring of inlet streams and storm runoff sites which may pose a significant threat to water quality.

WHAT YOU CAN DO: Go out in the rain! Look for areas on your property that are starting to erode into the lake. Members of the LAON team can help evaluate issues and help you plan remediation before major costly repairs become necessary. ***Check out the LAON website for simple and effective techniques.*** Precisely because excess phosphorus comes from erosion, each property owner’s erosion control efforts make a difference.

Watershed Protection

Our multifaceted watershed protection program focuses on reducing erosion to minimize harmful runoff into our lakes. We survey to identify erosion sites and help with remediation. We also educate property owners on their critical role in reducing erosion and are available for consultation on specific issues.

Over the past seven years, LAON’s watershed surveys revealed many erosion sites on North Pond and Lake Pennesseewassee, 71 of which were subsequently remediated with the help of Federal Environmental Protection Agency 319 Grants. As a direct result, over 100 tons of harmful sediment was prevented from flowing into those two lakes annually!

A sign of success is that North Pond has shown improvement in recent years. Unfortunately, the extraordinary rain and erosion events described above negated many of our gains on Lake Pennesseewassee, but we’re still in the fight. We were awarded a second grant for Penn and have begun additional remediation work, including our most ambitious project to date – working with property owners to replace an undersized culvert with a bridge. LAON also emphasized the importance of replacing one of the Town’s undersized culverts, and it now plans to complete that project next year.

Hobbs Pond Update

Hobbs Pond has not only experienced increasing phosphorus levels recently, but also visible cyanobacteria (algae) from 2021 to 2023. Fortunately testing indicates some improvement, but more monitoring is needed as it is a complex situation.

LAON will conduct a full survey of the Hobbs Pond watershed in partnership with the Maine DEP beginning on June 1st. Property owners were notified by postcard and email (where possible). We will work with property owners to address erosion site issues and will also seek grant funding to offset remediation costs.

Helping Property Owners: Watershed Protection Initiative (WPI)

Thru LAON members generous support, we were able to create a mini-grant system to expand our ability to identify and correct erosion issues. We are training volunteers to evaluate potential erosion sites and have some funding to help defray remediation costs. We encourage members to contact LAON if they believe erosion on their property or road may be flowing into a lake. If a LAON evaluation considers it a high priority, we will provide matching remediation funds. Funding, which comes from dues and donors, will initially be limited but will hopefully expand with success. Email LAON if you are concerned about an erosion site on your property.

Courtesy Boat Inspections (CBI)

CBI works to prevent invasive species from entering Lake Pennesseewassee. In addition to looking for hitchhiking plants, and debris that can carry other invasive species, we educate boaters about this threat and how they can help keep Maine's lakes free of invasive species.

Last year we performed 1,783 inspections. Many of the inspected boats were potential carriers of invasive species because they had previously been on a different lake. Eight suspicious plants were found but fortunately none of them were invasive.

CBI isn't 24/7, nor is it on all lakes, so prevention is best. We each have a responsibility to ensure that **anything** we and our visitors put in a lake, including, fishing gear, anchors, kayaks, and paddles is clear of plants, debris, and mud – places where aquatic hitchhikers hide. We depend on everyone doing their part.

Monitoring our Lakes for Invasives

We hire lake scientists to perform an annual comprehensive Invasive Aquatic Plant Screening Survey (IAS) on each lake. Fortunately, they have not found invasive aquatic species but have found these three shoreline invasives that we need to control:

We've largely controlled the spread of invasive Yellow Iris (YI) (thanks to Lise Dietrich and Jim Gibson for developing remediation techniques) yet clumps which can spread seeds still exist. **You**

can help: If you see any YI blooms along the shoreline (they bloom in June), or the other two interlopers, contact George Morton, 207-838-2821 or email: bizmorton@yahoo.com. This will help us map

where these invasives are to direct mitigation. **Helping with mitigation would be great, but please first check the LAON website for marking and mitigation techniques as incorrect actions can cause them to spread.**

Invasive Plant Patrol (IPP)

We are an active team of volunteers invested in keeping the four lakes healthy by keeping an eye out for any of the 15 species of aquatic invasive plants considered "imminent threats to Maine waters." IPPers monitor the water near their property for signs of any aquatic intruders and in late summer, team members use easy techniques to check their assigned sector. So far nothing has been detected. Since our team is trained to be on the lookout, we also help locate terrestrial invasives.



Yellow Iris



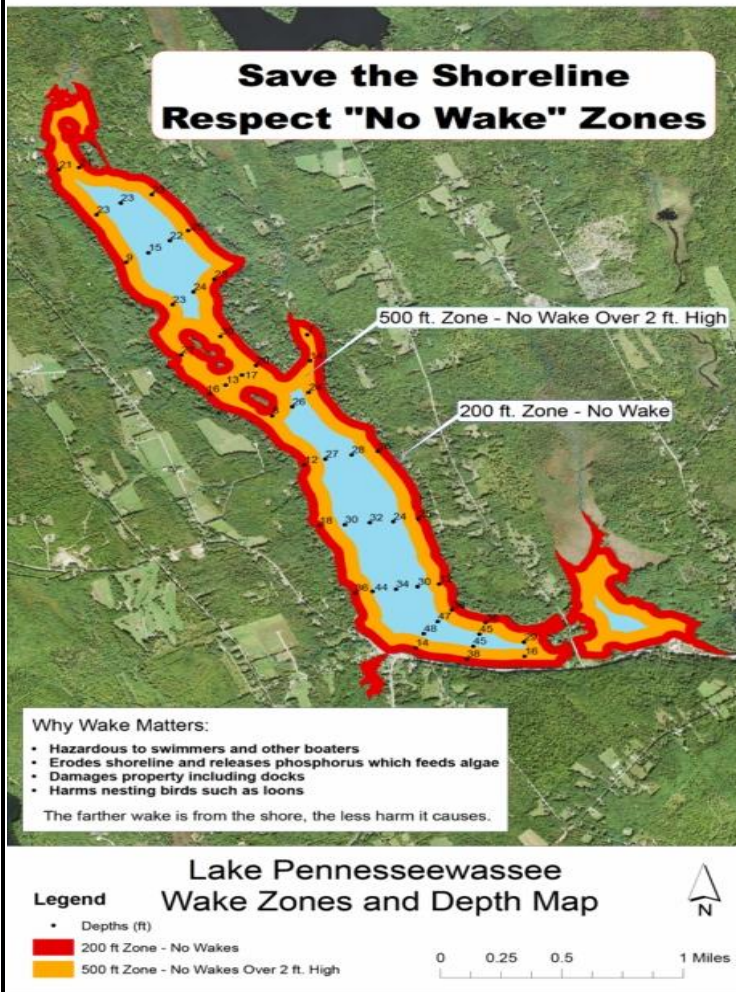
Purple Loosestrife



Water Forget-Me-Nots

We have a wonderful group, but more volunteers are always needed. In July we will hold a half-day Plant Paddle for those interested in learning how to determine if a plant is invasive. You can attend just to learn how to participate in having “eyes on the lake,” or you may want to join our team. Contact: Lynn Girifalco at lynn.girifalco@gmail.com.

And There's More



NEW LAW! Wake Boats are a growing concern. When used near the shore, their high wake has injured people, damaged lake bottoms, eroded shorelines (adding phosphorus), and damaged docks and other property. The state is taking notice and recently passed legislation seeking to reduce negative impacts. **The new law says that wake-board activities cannot occur in less than 15' of water, or within 300' of a shore.** It establishes fines and stipulates that multiple offenses would be considered a crime. Maine's Inland Fisheries and Wildlife will take complaints and compile data to guide further actions.

IF&W Gray office: (207) 287-2345

LAON created waterproof depth and wake zone maps for Lake Penn, North Pond, and Sand Pond, showing wake limits, including a recommended 500' zone for wakes over 2 feet because large waves need at least that distance to dissipate. Maps are available at the kiosks and by email. Let us know if you would like one to help guide your guests and visitors.

8th annual Super Informal Lake Penn Boat Parade Thursday, July 4 at 3pm (rain date: Friday, July 5). Meet at the boat launch. Decorations are encouraged!

9th Annual Length of Lake Swim Sunday, August 18
This annual fundraiser and celebration of the health of our lakes welcomes individuals, 2 and 3 person teams. If you want to swim or help with a party boat, contact Susan Jacoby at: 617-833-0646 or skjacoby@comcast.net



LAON ANNUAL MEETING on Zoom Saturday, JULY 20 at 9:30am

You need to register for the meeting at the link below, or on our website (<http://norwaylakes.org>).

Register at: https://us02web.zoom.us/meeting/register/tZclcu2gqjgjHtBA-VJfmVJb7tvsvr_QEZ5yp

If need help with Zoom or registering, email LAON at: norwaylaon@gmail.com

Member Dues and Support Information

LAON: Protecting Norway's Lakes Since 1971

Yes! I want to help protect Norway's Lakes by joining LAON or by renewing my membership at the following level.

___ Benefactor; \$1,000 or more*


___ Patron; \$500 or more

___ Steward; \$250 or more

___ Friends of the Lakes; \$150 or more

___ Family; \$50 or more

___ Individual member; \$30 or more



We hope you can support us at least at this level

Checks can be mailed to:
Lakes Association of Norway
P.O. Box 505
Norway, ME 04268

****Please make checks payable to LAON****

LAON is a 501(c)(3) organization. ALL donations are fully tax deductible.

Contributions can also be made on our website (www.norwaylakes.org) under "Membership and Support" using PayPal

**If you mail this sheet back, please provide this Information:
(Please Print Clearly)**

Name(s) _____

Lake Address _____

Mailing Address _____

Email Address _____

Thank You For Your Support