



# Welcome to the 2023 LAON Annual Meeting

## Meeting will start at 9:30

### You are all muted for now.

If you haven't renamed your Zoom identifier to your real name, please do so now. It helps us take attendance.



# Agenda

- Opening
- Input from Members
- Preventing/Controlling Invasive Plants
  - Aquatic
  - Shoreline Invasives
- 2022 water quality test results
- Watershed protection
  - Watershed surveys/remediation
  - Watershed Protection Program
- Outreach
- Financial summary
- Election of LAON Officers
- Closing



# Getting started

- Might be “Preaching to the choir,” but...  
You can reach others: Friends, neighbors, visitors.
- Need motion to accept last year’s minutes, and 2<sup>nd</sup>.



# LAON Board of Directors

- Sal Girifalco – President
- Jim O’Brien – VP (Watershed & Water Quality Testing)
- Tom Webster – Treasurer & Data Base Administrator
- Paul Shook – Secretary
- Norm Baker (Courtesy Boat Inspections – CBI Coordinator)
- Jeanne Silverman
- Tom Curtis
- Lise Dietrich (Shoreline Invasives Chair)
- Susan Jacoby (Outreach Chair)
- Pat Daniels
- George Morton (Shoreline Invasives)
- Paul Shook (Water Quality Testing)
- Stephen Zeeman (Water Quality Chair)
- Chuck Frost
- Deb Partridge



# Please Remember to Thank & Support our Sponsors

- Granite Ridge Estate & Barn
- Maine Beer Company
- Norway Savings Bank
- The Dock Guys
- The Woods of Maine
- White's Marina
- The Town of Norway



# Where do we stand?

- Do we believe our lakes are fragile due to two forever threats?
  - Invasive species
  - Watershed erosion
- Do we believe those threats have to be addressed proactively?
- Do you think LAON is on the right track and should go on?



# Where does LAON Stand?

## Good news & Not So Good News

- LAON has developed solid programs
- Preventing and controlling Invasives:
  - Courtesy Boat Inspectors (CBI) – Have made many saves
  - Invasive Plant Patrols – Eyes on the Lakes (IPP)
  - Shoreline Invasives Control (SI)
  - Invasive Aquatic Survey (IAS)
  - Established rapid response contingency fund
- Watershed Erosion
  - Water testing program to determine lake health (results are a bit troubling)
  - Received 2 grants, applied for 3rd ...Lots of remediation projects
  - Education via workshops, one-on-one consulting, annual meeting, website
  - Ready to roll out LAON funded Watershed Protection Program – Cost sharing incentives
- Outreach to inform wide group
  - Newsletter
  - Public events



# Where does LAON Stand?

## Good news & Not So Good News

- However...
  - We are doing so much, we are stretched thin
  - LAON is rapidly approaching a critical phase – Succession is a concern
  - Programs need more volunteers, and next crop of leaders
  - Board has been at it for many years (some have full time jobs)
  - Need new active members who can grow into leadership roles
- Where do you stand?
  - If able, we need you.
- **Without active support, the LAON's programs are at risk!!!**

As we discuss each, see where you can step in.



## Where LAON needs your participation

- Courtesy Boat Inspector(CBI)
- Invasive Plant Patrols (IPP)
- Shoreline Invasives Control (SIC)
- Water Quality Testing
- Watershed Protection
- LAON Board of Directors
- Be an advocate of Lake Stewardship (all)

Your engagement is the key  
to the lakes' health & future



**LAON NEEDS YOU**

**To Protect Our Lakes**

**-Lake Steward**

**-Lake Advocate**

**-Program Volunteer**

**-Board Member**



# Member input

- Insert questions
- Open to the attendees via chat



# Preventing and Controlling Invasives

A multi-pronged program

- Courtesy Boat Inspectors (CBI)
- Invasive Plant Patrols – *Eyes on the Lakes* (IPP)
- Shoreline Invasives Control (SI)
- Invasive Aquatic Survey (IAS)





# Courtesy Boat Inspections (Norm Baker)

CBI prevents  
what no one  
wants !



2,400  
inspections in  
2022: Last  
lake visited  
not Penn ~  
800





# CBI – Purpose, Results and More...

- Why? Keep invasive species out of Lake Penn – Our last line of defense (Boater is 1<sup>st</sup>)
- How? Voluntary inspections of boats in and out of Lake Penn.
- What: *We have had several critical “saves” since 2017.*

*“2022 saw 19 saves statewide including a save on a boat **entering the uninfested Pennesseewassee Lake in Norway, Maine.**”* (quote from the Maine DEP website)

- Who: Inspectors 2023
  - *Larry Levesque*
  - *Kurt Brown*
  - *Cheyenne Hill*
  - *Ray Gagne*
  - *George Morton (V)*
  - *Denise Whitely (V)*
  - **AND YOU!!!!**

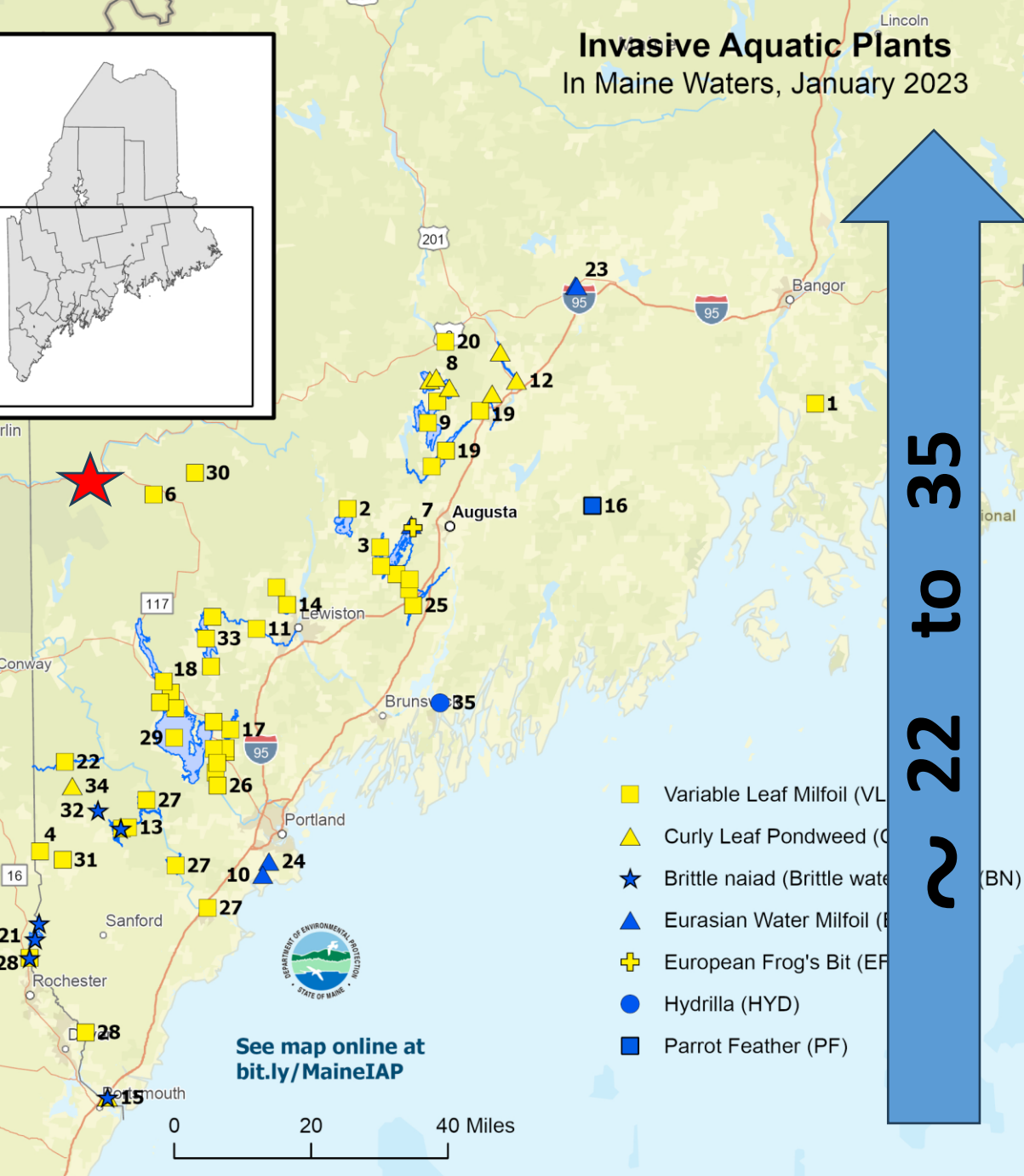
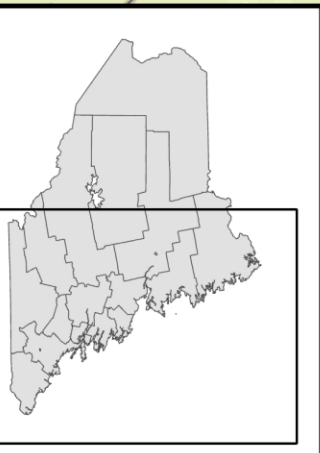


# Previous Waterbody Visited

- Is the critical question asked at each boat inspection
- Lakes around us that have invasives
  - Thompson
  - Long and Brandy
  - Sebago Lake
  - Bryant Pont
  - Cobbossee Lake
  - Messalonskee (Belgrade)



# Invasive Aquatic Plants In Maine Waters, January 2023



Key	Infested Waterbodies	Species
1	Alamoosook Lake	VLM
2	Androscoggin Lake	VLM
3	Annabessacook Lake	VLM
4	Balch Pond	VLM
5	Big Lake and Lewy Lake	VLM
6	Bryant Pond	VLM
7	Cobbossee Lake and Jug Stream	EWM, EFB, VLM
8	East Pond and The Serpentine	CLP
9	Great Pond and Great Meadow Stream	VLM
10	Grondin Pond	EWM
11	Hogan Pond and Little Androscoggin River	VLM
12	Kennebec River (Inc. Fish Brook, Fairfield)	CLP, VLM
13	Lake Arrowhead	BN, VLM
14	Lake Auburn and The Basin	VLM
15	Legion Pond	BN, CLP
16	Liberty Private Pond	PF
17	Little Sebago Lake (Inc. Collins Pond and Mill Pond)	VLM
18	Long Lake and Brandy Pond	VLM
19	Messalonskee Lake (Inc. Belgrade Stream and Messalonskee Stream)	VLM
20	Mill Stream (Norridgewock)	VLM
21	Northeast Pond and Milton Pond	BN
22	Ossipee River (Porter, Parsonsfield)	VLM
23	Palmyra	EWM
24	Pleasant Hill Pond	EWM
25	Pleasant Pond and Cobbossee Stream (Inc. Horseshoe Pond and Purgatory Stream)	VLM
26	Presumpscot River (Inc. Dundee Pond and North Gorham Pond)	VLM
27	Saco River (Limington Rips to Bonney Eagle Dam, Skelton Flowage)	VLM
28	Salmon Falls River (Salmon Falls R. Reservoir, Spaulding Pond)	BN, VLM
29	Sebago Lake (Inc. Sebago Cove, Songo River, and Panther Run)	VLM
30	Shagg Pond	VLM
31	Shapleigh Pond	VLM
32	Sokokis Lake	BN
33	Thompson Lake and The Heath	VLM
34	West Pond	CLP
35	Woolwich Ponds	HYD

See map online at [bit.ly/MaineIAP](http://bit.ly/MaineIAP)

Find out more: [www.maine.gov/dep/water/invasives](http://www.maine.gov/dep/water/invasives)

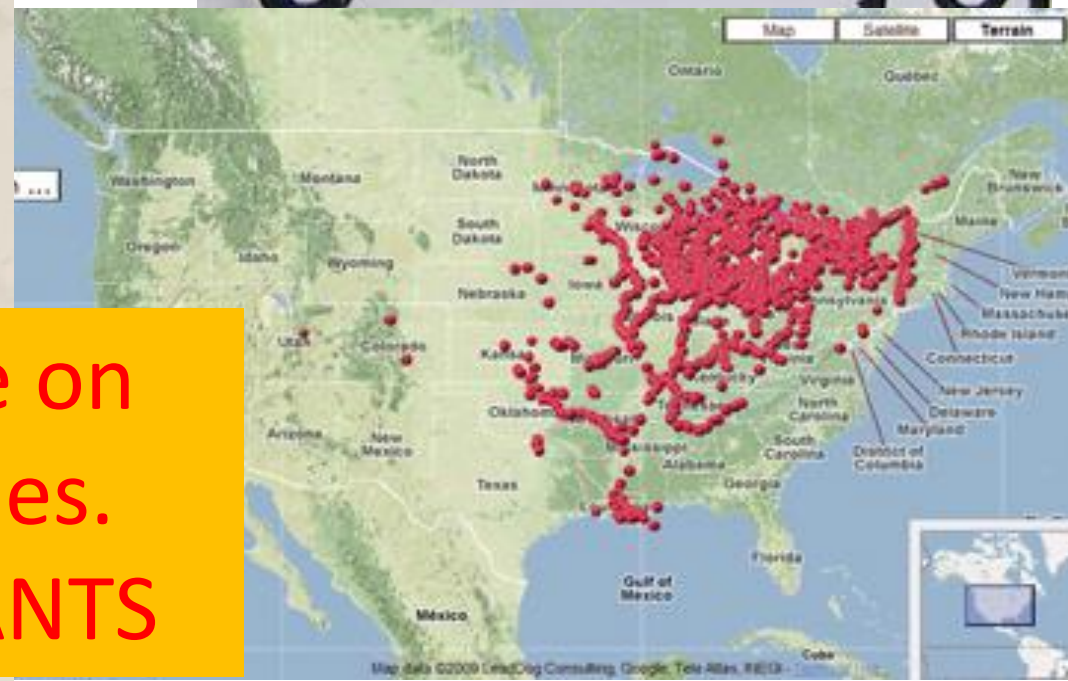
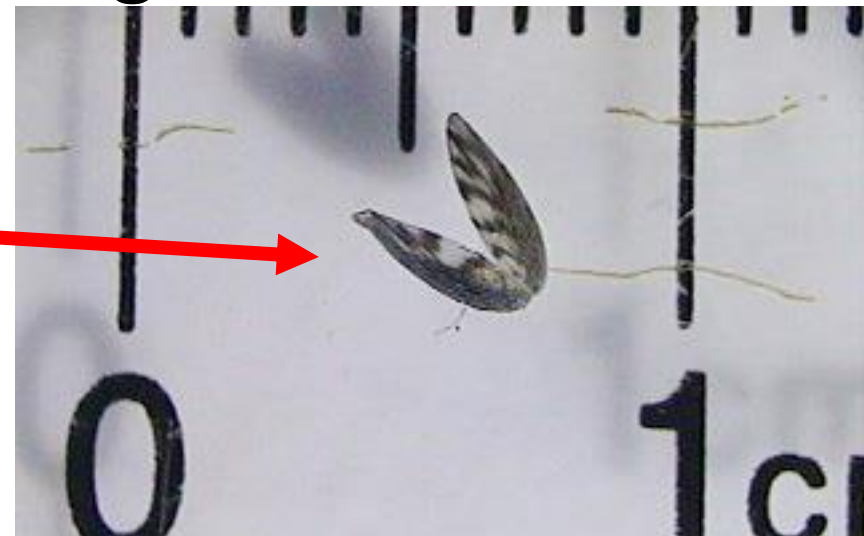


2018 Save  
(Made the  
News, still  
taught at  
seminars).

Eurasian  
Milfoil



Zebra Mussel  
(Hitching on the hitch hiker)



Invasive Hitchhikers can be on  
any plant, even friendly ones.  
Be sure to remove ALL PLANTS





# Thanks to

• **BIG SHOUT OUT TO Chris Coffin** for helping with data entry

Water Milfoil Images: Browse 511 x 2023 Maine CBI Dashboard x +

maine.maps.arcgis.com/apps/dashboards/de2b7d59cab1437187eb49ac26f1d852

### 2023 Maine Courtesy Boat Inspection Dashboard

Maine Department of Environmental Protection

Please note that data is considered preliminary, and subject to correction. For questions/assistance contact Becky Schaffner or Chris Reily. Download data here.  
Data coordinated and maintained by Maine Department of Environmental Protection.

Select Date or Date Range  
7/8/2023 and before

Select Organization  
**LAON (Lakes Assoc. of Norway)**

Select Launch  
None

Select Inspector ID (contact DEP for list)  
None

Waterbody	Count
Middle Range Pond	11
Sebago Lake	10
ANDROSCOGGIN RIVER	8
South pond	7
Cobbosecontee Lake	6
Parker Pond (2904)	5
China Lake	4
Island Pond	3
Messalonskee Lake	2
Tacoma	2
Androscoggin Lake	2
Cochnewagon Pond	1
Halls Pond	1
Mousam Lake	1
Sebec Lake	1

PAID INSPECTOR HOURS

188.8

PAID VOL

SHIFTS

48

INSPECTIONS

451 total  
397 motorized  
54 non-motorized

INVASIVE

0

3 plants found

PLANTS FOUND

Plant Status	Count
ENTERING	1
LEAVING	2

1 of 48

#### SHIFT DETAILS

##### Town Ramp Norway Lake, Penesseewassee Lake

July 7, 2023 (Fri)

AGENCY_DESC	LAON (Lakes Assoc. of Norway)
INSPECTOR_ID	4707
Total Inspections	10
Site	Town Ramp Norway Lake
Pay/Vol	Paid
Start Time	15:00
End Time	18:00
Invasive/Possible Invasive	0
TRAILERS	7

1 of 435

#### Inspection Details

##### Town Ramp Norway Lake

July 7, 2023

AGENCY	LAON (Lakes Assoc. of Norway)
INSPCOUNT	1
INSPECTOR_ID	4707
INSPN_TIME	15:05
DIR_IN_OUT	ENTERING
MOTORIZED	Yes
REG_STATE	ME - MAINE
STICKER	Yes
NUM_NM_BOATS	
LAST_WATERBODY	Penesseewassee Lake
LAST_STATE	ME - MAINE



# Prevention – Your Role

- Every lake is a threat, every lake is vulnerable
- LAON doesn't inspect all boats

## ALWAYS (For You, Visitors, Renters):

- Clean your boat and anything that goes into the water of any plants and debris.
- Drain the boat and any compartments of standing water.
- Dry the boat prior to entering any new body of water (5 days).  
(or pressure wash @140° or wash with 10% chlorine)



# Polling Question 1 - CBI

1. Can you assist the Courtesy Boat Inspector (CBI) program?
  - a). I can be a volunteer inspector (not always needed, but we can't be sure we can find employees, so we need a backup team)
  - b). I can help with CBI administration.
  - c). Sorry, not able to help.



Next:

Attendance

Then: Shoreline Invasives (Lise Dietrich)



## Polling Question 2 (Attendance)

2. Are you attending the LAON 2023 Annual Meeting?

- a) Yes
- b) No



# Shoreline Invasives

## Coordinators: Lise Dietrich & George Morton

### Why care?

- They spread easily
  - Crowd out natives
    - Removes food sources,
      - Block waterflow
      - Take over
        - Monoculture
- Only Lake Penn, for now

Invasive Plant Patrol (IPP) searches for shoreline invasive sites on all 4 lakes



# Our First Invader

## YELLOW IRIS - **INVASIVE**



**SINGLE FLOWER**



**EXTENSIVE STAND**



**SEED PODS**

### HARMLESS LOOKALIKES

WILD IRIS

**NATIVE, HARMLESS**



YELLOW LILY

**HARMLESS**





# Dealing with the Yellow Iris

<b>Locate</b>	LAON's Invasive Plant Patrol (IPP) Team <b>looks for and marks locations</b> during the June bloom period
<b>Control And Remediate</b>	Same techniques that you would use to control weeds in your garden: <ul style="list-style-type: none"><li data-bbox="733 661 2293 714"><input type="checkbox"/> <b>Collect flowers &amp; seedpods</b> (“deadhead”) and dispose in town trash</li><li data-bbox="733 739 2369 792"><input type="checkbox"/> <b>Cut back the leaves</b> to reduce energy and nutrients passing to the roots</li><li data-bbox="733 818 2267 942"><input type="checkbox"/> <b>Careful digging</b>, ensuring the entire root system is removed and no particles are released to open water (<b>LAON's remediation team</b>)</li><li data-bbox="733 968 2369 1092"><input type="checkbox"/> <b>Covering</b> with “benthic barriers” to kill the plants via excessive heat and lack of sunlight (<b>LAON's remediation team</b>)</li></ul>





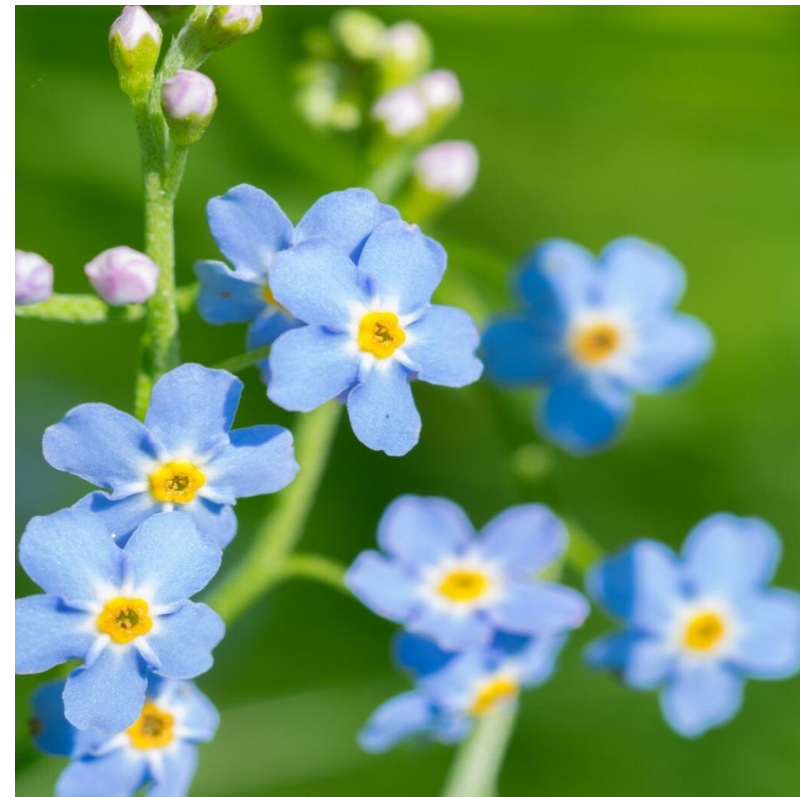
# Other Interlopers

Purple Loosestrife



Blooms July - September

Water Forget-me-nots



Blooms June - July



# What You can do

If you see what might be a Yellow Flag Iris, Purple Loosestrife, Water Forget-Me-Not:

- Email LAON a photo (try to include some identifying feature) with GPS Coordinates or nearby street address, along with your contact information.
- Place a driveway marker, if you can.
- Collect flowers, cut leaves, if you can.





# Our Volunteers

Thanks to volunteers:

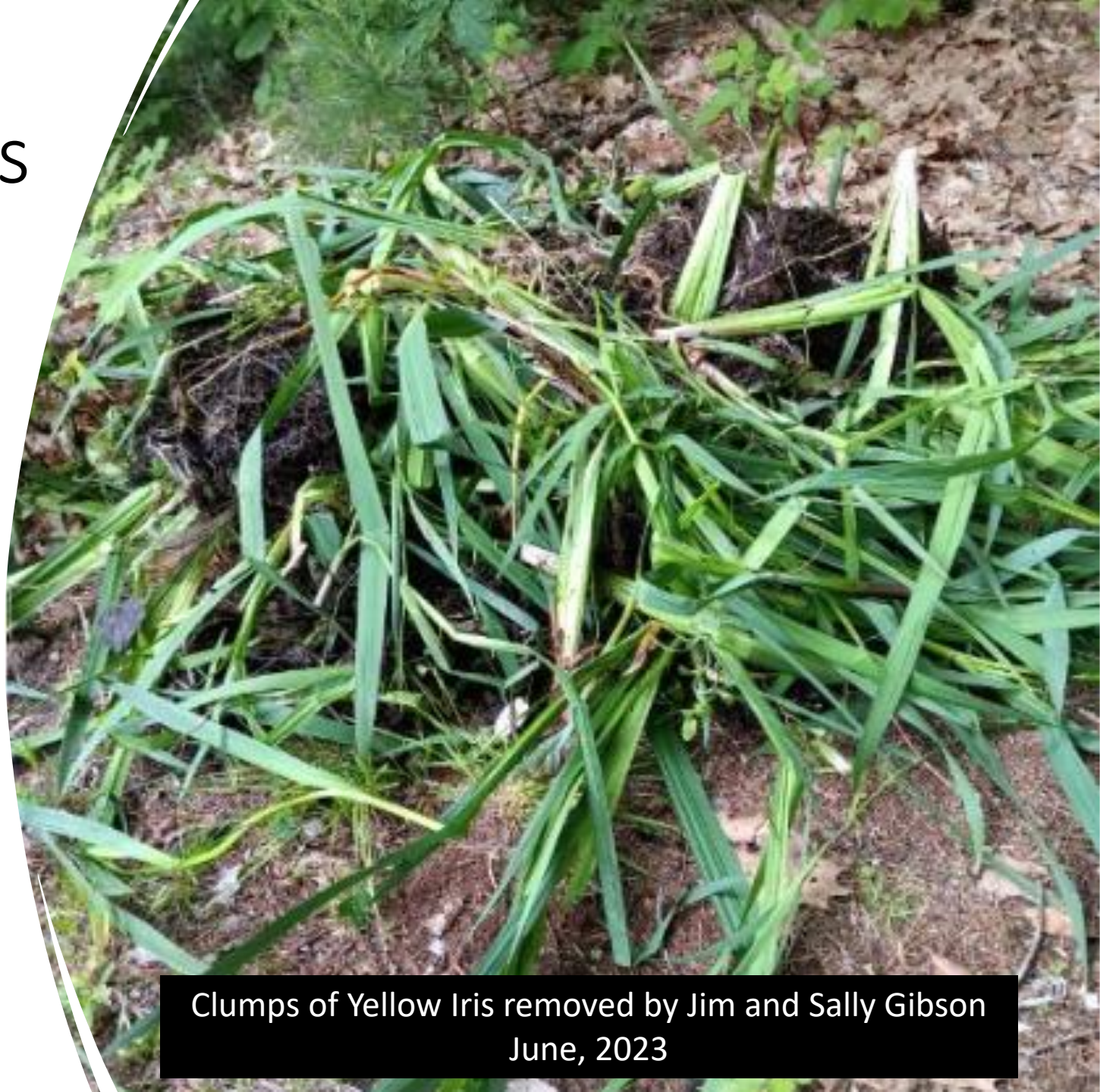
Invasive Plant Patrol (IPP) Team

Jim and Sally Gibson

Sherry Otterson

George Morton

**Need more volunteers  
for remediation**



Clumps of Yellow Iris removed by Jim and Sally Gibson  
June, 2023



## Polling Question 3 (SI- Shoreline Invasives)

### **3. How can you assist the Shoreline Invasives Control Program?**

- a). I can help with remediation/removal (sometimes a little messy).
- b). I can help with SI administration.
- c). Sorry, not able to help.

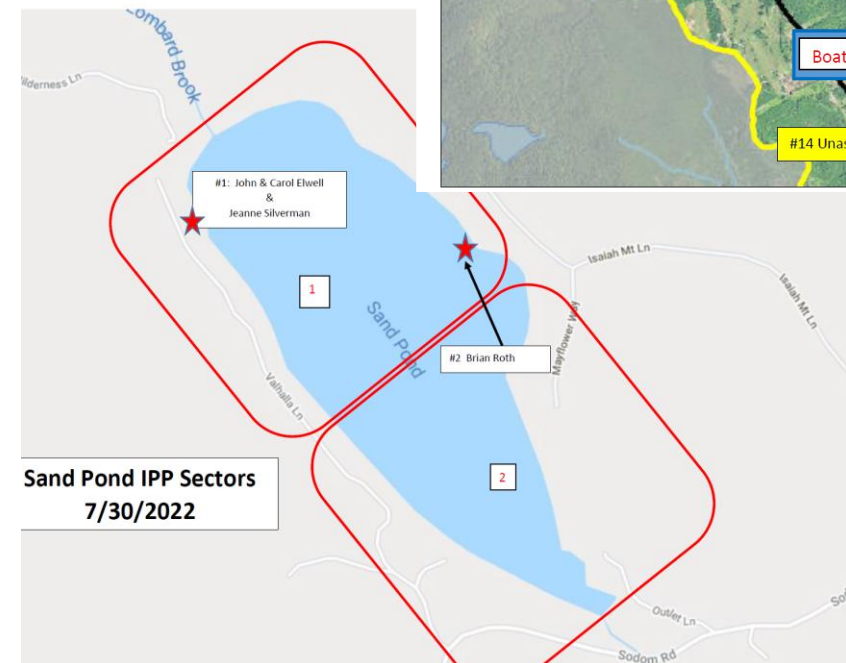
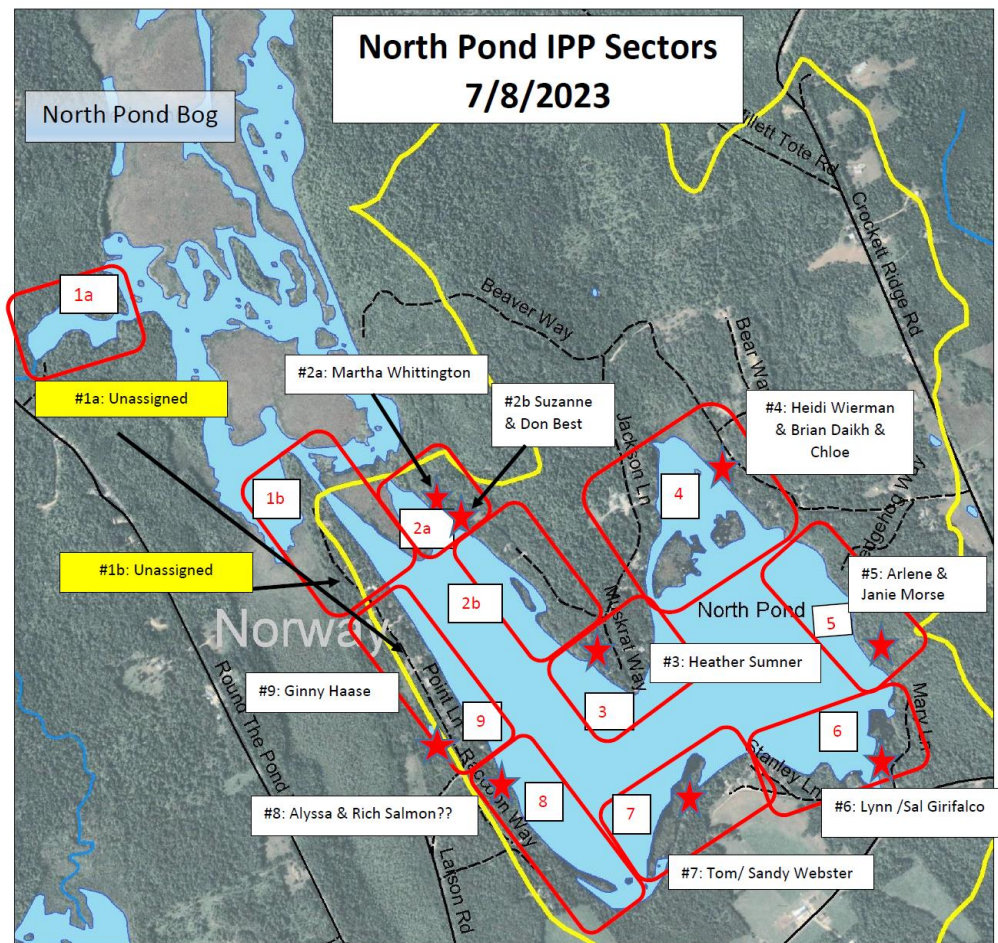
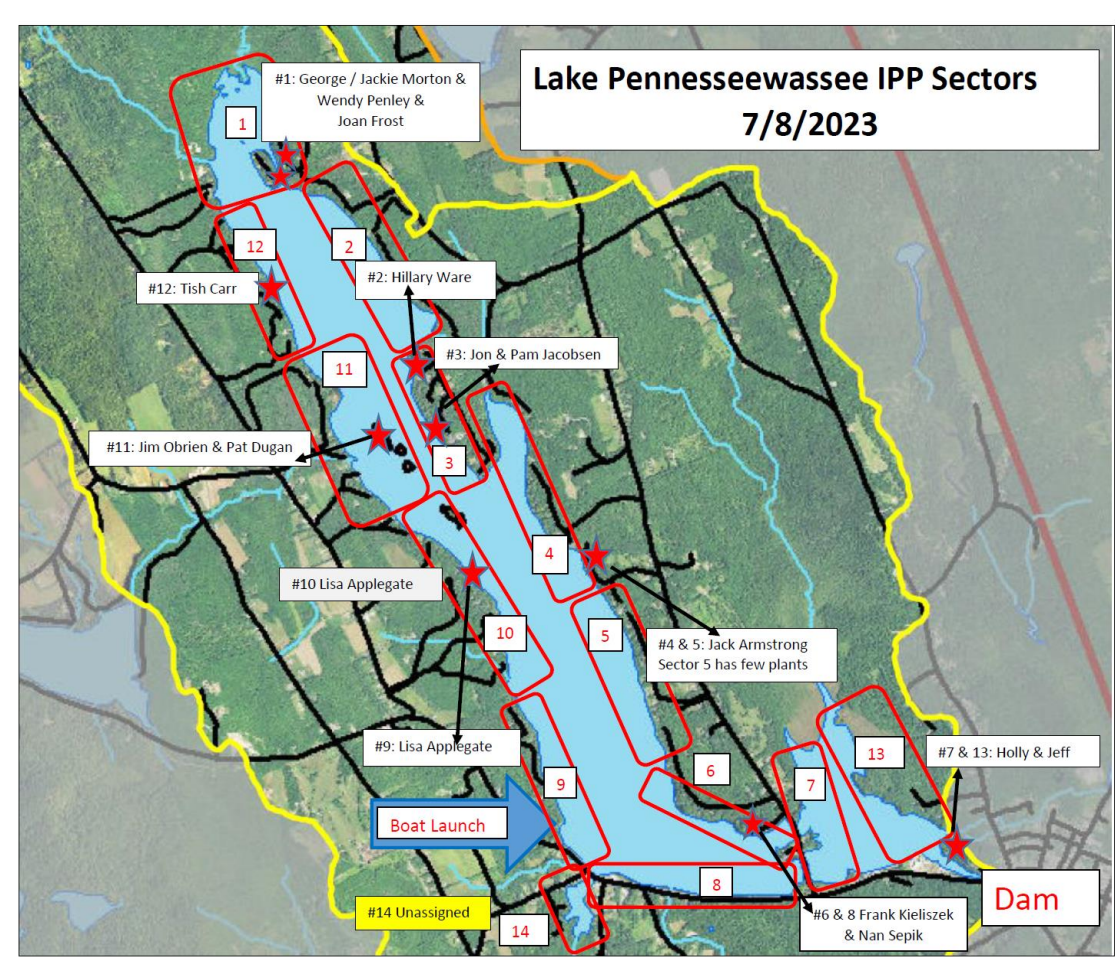


# Eyes on the Lakes – Our Next Level of Protection (Lynn Girifalco)



- CBI can never be 24/7, or foolproof, only on Penn
- Invasive Plant Patrol (IPP)
  - IPP teams get to know their sectors
  - Do while enjoying time on the water
  - “Eyes on the Lake” look out for plants that don’t belong
  - Have patrols for all 4 lakes – Thanks to volunteers
  - Some unpatrolled & over-extended areas - need more Patrollers
- Begin with a Plant Paddle (August – fun & easy)
  - Training on gathering plants
  - Use of “Quick Key” to identify possible threats







Part of IPP Team  
(+ 40)



LAON  
INVASIVE  
PLANT  
PATROL

LAON  
INVASIVE  
PLANT  
PATROL

LAON  
INVASIVE  
PLANT  
PATROL

LAON  
INVASIVE  
PLANT  
PATROL

MAINE  
Canoe  
SYMPOSIUM





# What you can do Protect your lake while recreating

- Attend a Plant Paddle (August). Then you can:
  - Join an IPP on your lake
  - You can even just learn the basics, and be on the lookout during normal lake activity – be additional “Eyes on the Lake”





## Polling Question 4 (IPP)

4. Would you like to attend an Plant Paddle to help protect your lake (can be either full IPP, or casual observer)?

- a) Yes
- b) No
- c) Maybe



# Water Quality

Jim O'Brien, Paul Shook, Steve Zeeman



# Our Water Quality Monitoring Efforts

## Monthly measures in each lake

- Oxygen and temperature profile with depth
- Total Phosphorus concentrations which are an **important nutrient for algae** and so can help predict nuisance blooms
- Chlorophyll concentration as a measure of the **amount of algae**
- Secchi depth as a measure of **water clarity**
- Conductivity which can indicate inputs of **pollutants, especially road salt**
- pH is an indicator of lake chemistry and possible **influence on what can grow**
- Alkalinity is the buffering capacity of water and **ability to resist acidification**



# Our Goal

- Our goal is to keep lakes oligotrophic or low productivity (of algae)
- Many, but not all the indicators are oligotrophic

Trophic Status	Total Phosphorus (ug/L)	Chlorophyl (ug/L)	Transparency (Meters)
Ultra-Oligotrophic	<5	<2.5 (S)	>6 (S)
Oligotrophic	5-10	<8 (N,P,L)	>3 (N,P,L)
Mesotrophic	10-30 (S,N,P,L)	8-25	1.5-3
Eutrophic	30-100	25-75	0.7-1.5
Hyper-Eutrophic	>100	>75	<0.7



S = Sand, N = North, P = Penn., L = Little Penn.



# 2022 Key Lake Measures

Lake	Average 2022 (2021/Historical)				
	Avg P	P Surf	P Bot	Chl	Secchi
Sand Pond	14.5 (9.3,9.0)	4 (4.3/3)	25 (14.4/15)	1 (2/2.5)	7.4 (7.3/7.4)
Little Pennessewassee	21.1 (22.4/14.5)	7 (7/NA)	43.6 (37/19)	2 (3/4.5)	5.6 (5.8/5.6)
Pennessewassee	14.5 (10.1/10.5)	7 (6/8)	22(14.2/13)	3 (3/4.6)	5.2 (5.7/5.2)
North Pond	19.3 (24.5/25.5)	16.5 (15.6/17)	21.8 (33.4/34)	4 (6/6.9)	3.2 (3.2/3.0)

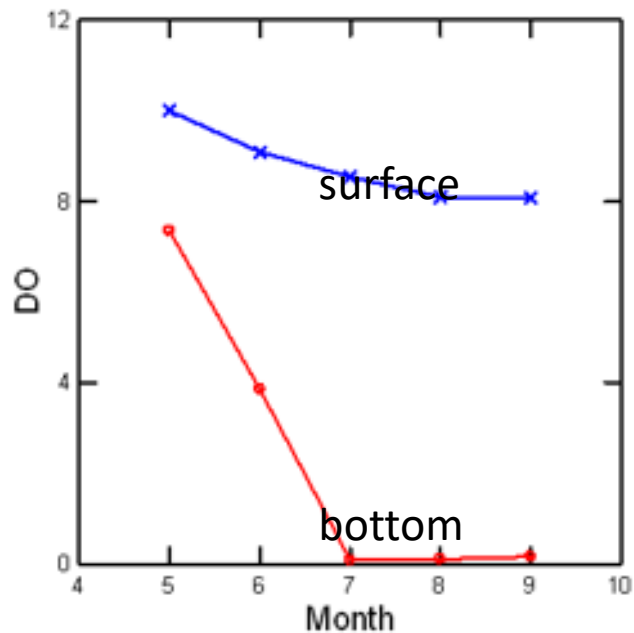
* Historical data through 2018 can be found through :		<a href="https://www.lakesofmaine.org/index.html?r=1681319726">https://www.lakesofmaine.org/index.html?r=1681319726</a>			
Secchi - higher number is better		2022 Average vs Historical			
P - lower number is better		Improved			
		Worsened			
		Too close to call			

- Phosphorus is a concern for all the lakes (Goal is 5 to 10 Avg P)
- Concentrations higher than historical levels in the bottom waters-deep lakes
- **Some improvement on North Pond**

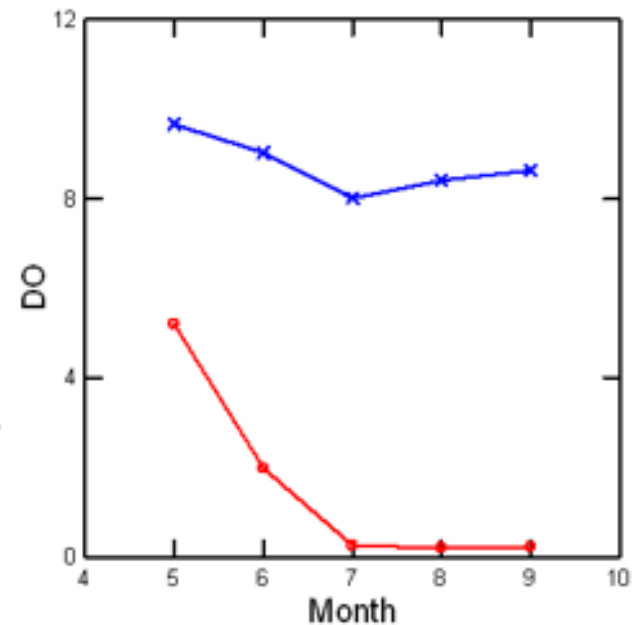


# Internal Loading of Phosphorus

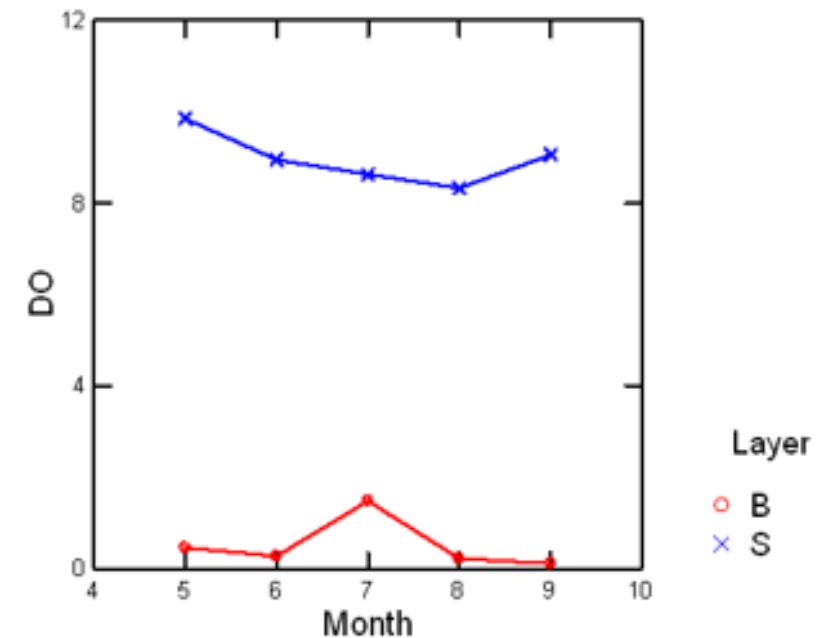
- Phosphorus is stored in the sediments of a lake
- The sediments can release phosphorus when dissolved oxygen drops to very low levels as we see in our deep lakes
- Oxygen levels drop due to accumulated organic matter



Lake = Penn



Lake = Hobbs



Lake = Sand



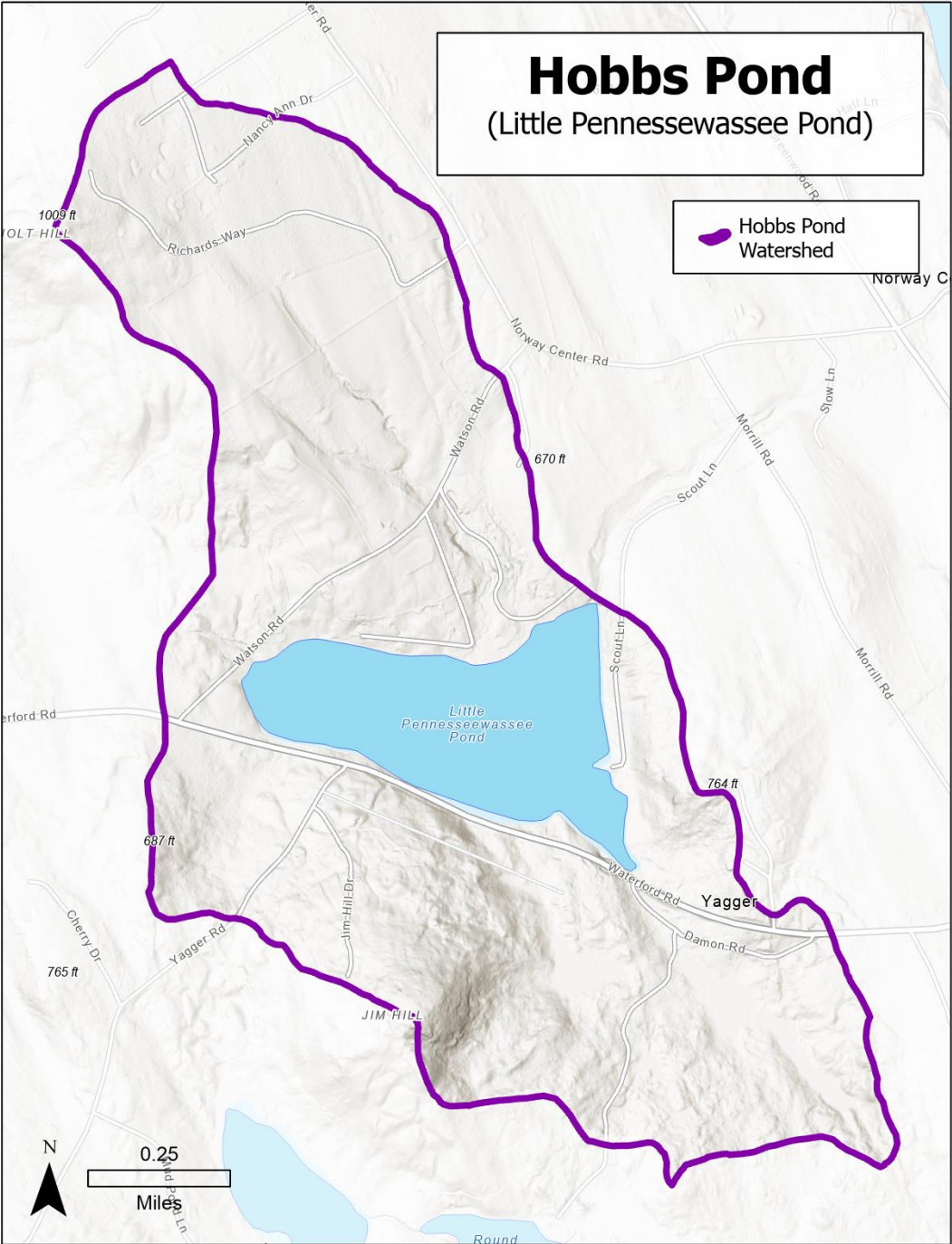
# Preventing Algal Disasters – What is LAON doing?

- Conducted watershed surveys on North Pond, Lake Pennessewassee and partially on Hobbs Pond to identify erosion problems.
- Remediation is complete on North Pond (promising results) and in process on Pennessewassee
- Implemented increased testing on Hobbs Pond to identify potential phosphorus sources contributing to cyanobacterial blooms
- Progress limited by human resources
- BUT, it is up to each of us to prevent phosphorus from entering the lakes
  - Don't fertilize lawns
  - Plant buffers along the shoreline
  - Identify and eliminate erosional spots

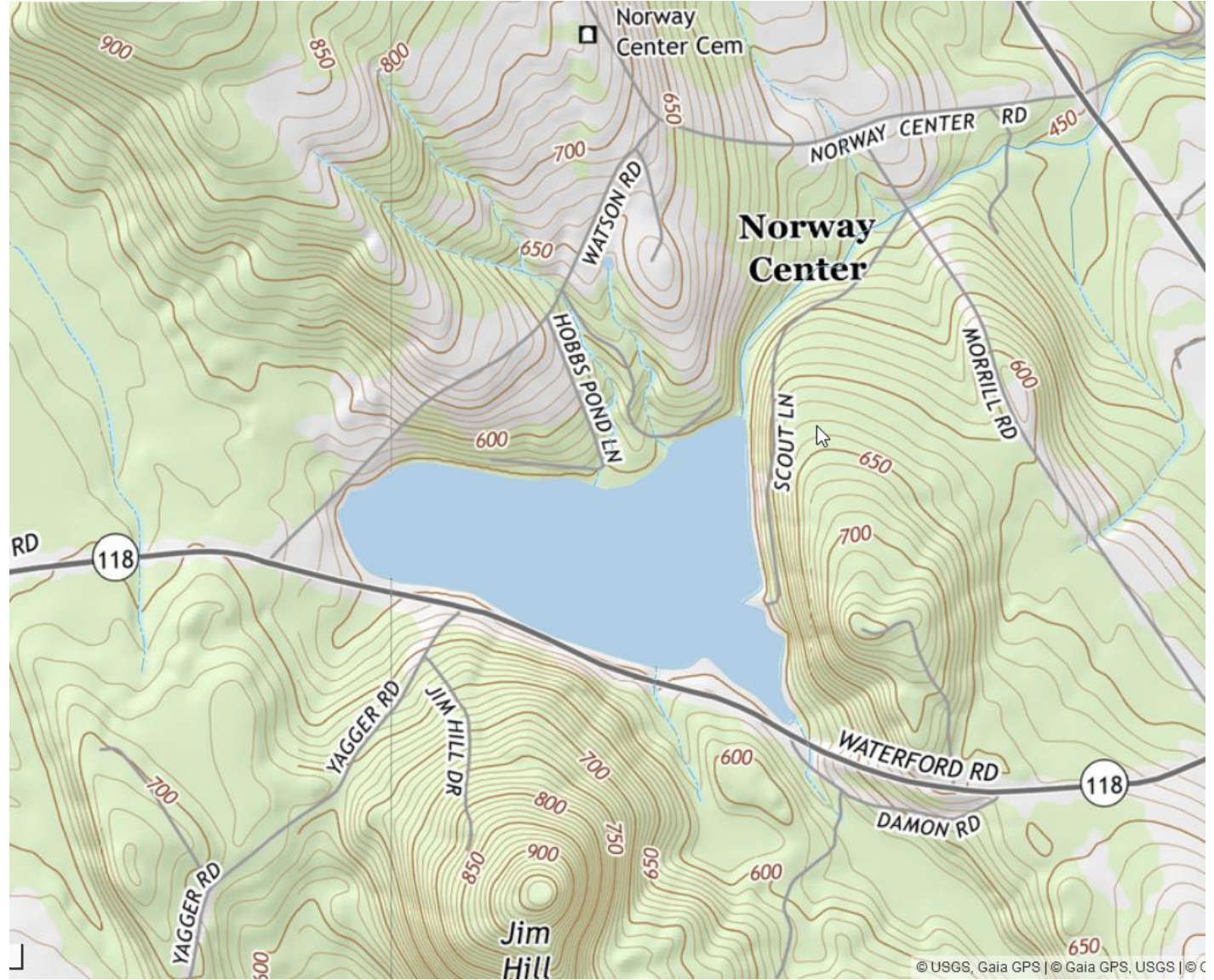


# Hobbs Pond (Little Pennessewasse Pond)

Hobbs Pond Watershed



# Hobbs Pond Watershed







# Hobbs Pond Water Quality Trend

Total P Average May-Sept (PPB)

	2018	2019	2020	2021	2022
SURFACE	5	6	6	7	7
BOTTOM	18	23	20	38	44



- Total P near bottom significantly higher in 2021/2022
- Average Secchi clarity nearly 1 M lower in 2021/2022 than prior 3 yrs
- Cyanobacteria (Planktothrix) present in 2021 and 2022
  - 2021 – visible approx. 3 week period mid July to early August
  - 2022 – visible approx. 9 week period early July to mid September

***Significant impact on everyone who uses the lake – home water use, swimming and recreation***



# Hobbs Pond

- DEP status changed to “Threatened” (grant eligible)
- Enhanced monitoring includes additional Phosphorus sampling and animal DNA testing
- Evaluating known erosion sites
- Investigating cow DNA detected in runoff
- Investigating possible solutions
- On schedule to plan and conduct full survey with DEP in spring 2024



# Polling Question 5 (Water Testing Team)

We need more water testers. You get to use cool equipment like a Secchi disk, an oxygen meter, a depth finder, a wind gauge, a water depth sampler, and maybe they will let you use the lab...need I go on?

5. Would you like to become a trained member of the water quality team (collecting and processing samples).

- a) Yes
- b) No



# Watershed Protection – Jim O’Brien & Sal Girifalco

- Water quality is slipping – increasing Phosphorus levels
- Primary cause - erosion into our lakes
- Our watershed efforts are designed to reduce it.
- North Pond has decreased Phosphorus after remediation (the only lake to do so)
- 10 year plan for Lake Pennesseewassee

Why do we do it?

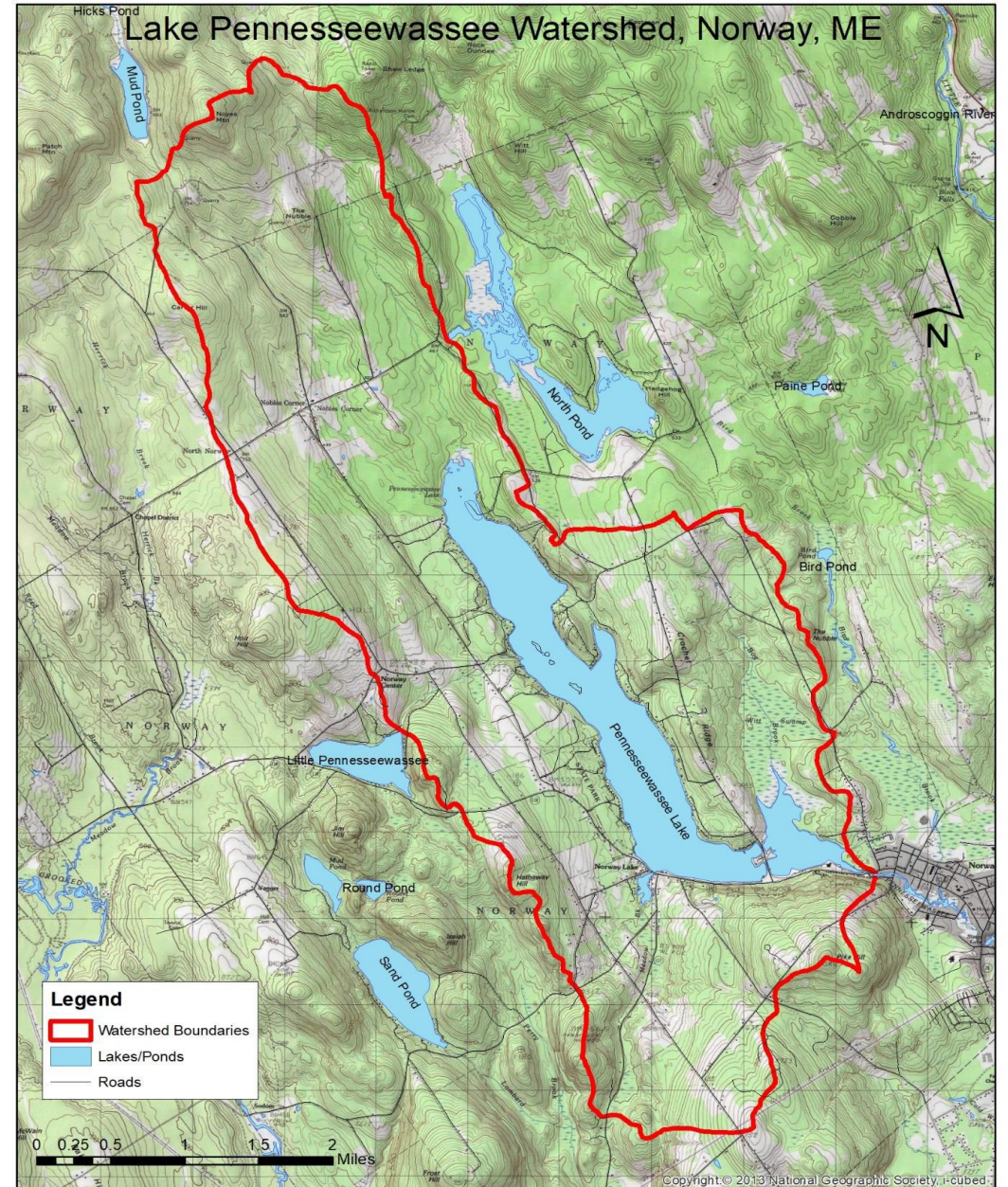
**Erosion = Phosphorous = Algae**





# Lake Pennesseewassee Watershed Protection Project

- Phase I completed in 2022
  - 32 private and public roads sites
  - 13 lakefront property sites
  - Prevents **66 tons sediment/yr.**
- Phase II grant application submitted in May
  - Budget
    - Total Phase II costs - \$162.5k
    - Federal Funds - \$94.7k
- Award decisions by Maine DEP in August
- For work completion between 2024 and 2025





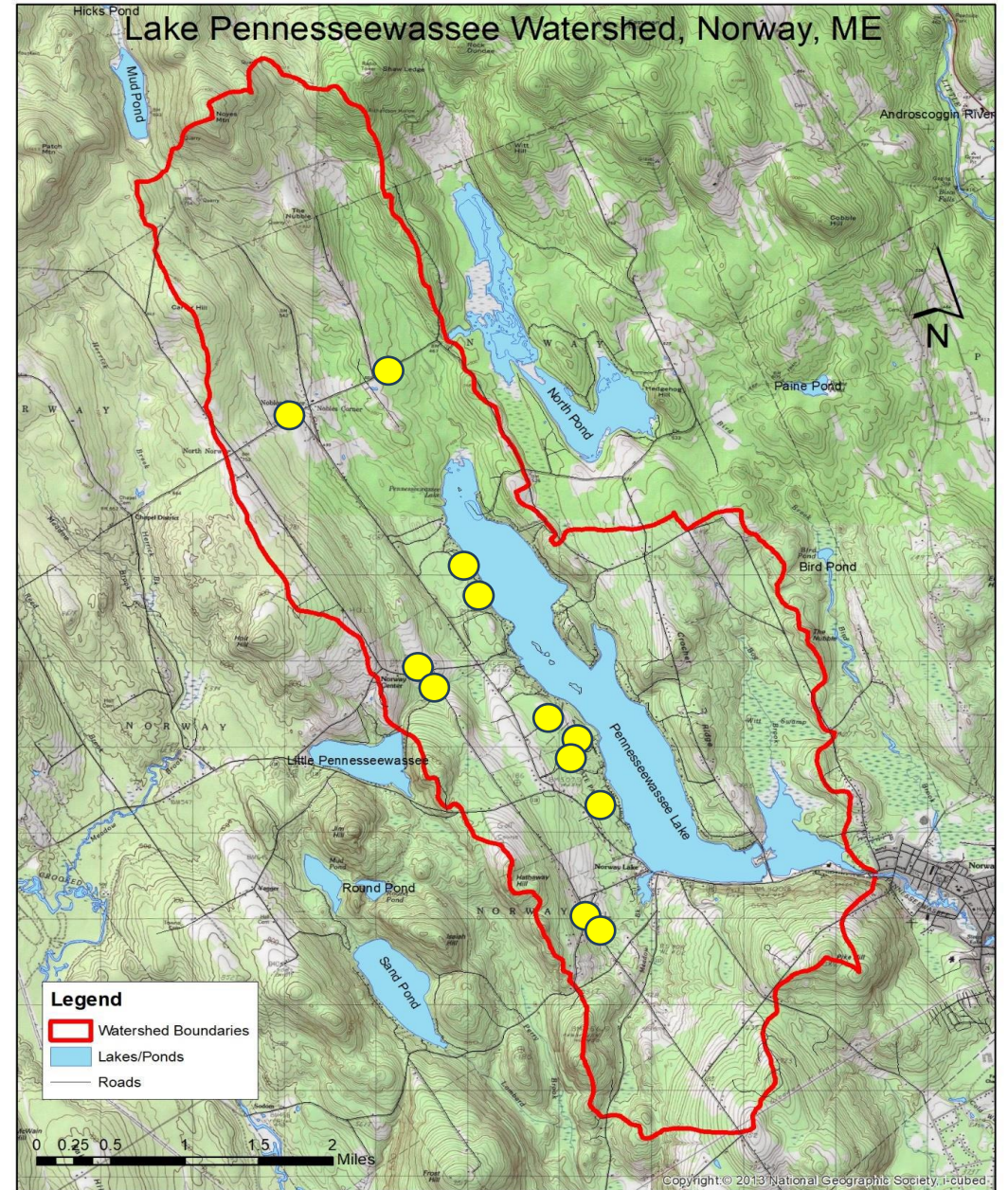


# Phase II Focus Areas

- At least 16 high and medium impact NPS sites
  - Private and public roads
  - Residential sites with extensive work
  - Commitment from many property owners
- At least 12 residential sites



2 Washouts. 22 Tons in Spring washout



Phase II NPS Sites





# Providing Solutions

- 900 volunteer hours contributed in Phase I – THANK YOU!
  - 350 of these were Sal and Jim
  - Need expanded management team for Phase II
- Need to go beyond Grant projects
- Next: New Watershed Protection Program





# Watershed Protection Program (WPP) 2 Part Program

- Have done a lot to reduce Erosion & Phosphorus, but
  - Gov Grants too slow (can be 3 year process before spending money)
  - Gov Grants not guaranteed and a couple of leaders inadequate
  - Hobbs now Gov grant eligible, but \$ not available until 2026
  - Sand Pond not grant eligible
- Idea:
  - Gov Grants are an incentive
  - LAON funds its own incentive program
  - Build Technical Support Team
  - BOTH ARE NECESSARY
  - Will we get participation?



# Initial Thoughts on How WPP would work

## Preparation

- Establishes initial incentive amount (\$10,000)
- Define Process
  - Erosion has to impact one of our lakes
  - All projects need to be approved in advance and when completed
  - Property owners pay, then LAON reimburses up to 50%
  - Establish small oversight group. Could vary with the cost of the project (more expensive, more people involved with decision).
  - Hobbs and Sand Pond initially have some priority
- Provide Erosion evaluation workshop(s)
  - To educate property owners on what to look for
  - To find Technical Support Team volunteers
- Jim and Sal train Technical Support Team
  - Site visits (before and after remediation)
  - Mentoring
- Place guidance on determining erosion sites on website
- Communicate that we are ready to go!



# Initial Thoughts on How WPP would work

## Execution

- Someone reports an erosion site (property, driveway, camp road)
- Support Team (pairs preferred) evaluates; makes recommendations
  - Remediation plan developed
  - Cost and impact evaluated - Enough bang for the buck?
- For approved projects
  - Remediation could be done by property owner or contractor
  - Property owner pays remediation costs (materials, and/or contractor)
  - Approved projects reimbursed up to 50%
- Evaluate program for effectiveness and value
- Decide whether to continue program
- Self identified sites on Lake Penn could be used if we have surplus Phase II funds





# Polling Question 6: Watershed Protection Program

6. Would you like LAON to implement the Watershed Protection Program?

a). Yes

b). No



# Polling Question 7: Watershed Protection Support Team

7. Will you be part of the Technical Support team?  
We will not have program without a team.

- a). Yes
- b). No



# Boat Wake (Sal)

- Part of fun on lakes, but an increasing issue (more traffic, bigger boats)
  - Need a Balance – Follow laws & Guidelines
- Higher water level = more wake impact
- Why wake matters:
  - Hazardous to swimmers & other boaters (recent grandchild)
  - Erodes shoreline & releases phosphorus, which feeds algae
  - Damages property, including docks
  - Harms nesting birds, such as loons
- Most often a lack of awareness and attention – No one wants to do harm
- Not only us, but visitors, renters



## *Why we should all care about boat wake*



*Waves erode shorelines and deposit nutrient laden soil directly into the lake*





# Wake Guidelines

- Wake diminishes with distance, so the farther from shore, the less damage.
- Look to see if wake is hitting the shore. If it is, it is eroding.
- State law: “Headway speed” within 200’ of any shore. Really means no wake.
- From research done on other Lakes, a good guide is not to have wake higher than 2’ if within 500’ of shore. Not ideal, but a compromise.
- Using the above information, developed “Wake Zone & Depth Zone Maps”
- It’s difficult, but communicate this to others.



## Save the Shoreline Respect "No Wake" Zones



500 ft. Zone - No Wake Over 2 ft. High  
200 ft. Zone - No Wake

**Why Wake Matters:**

- Hazardous to swimmers and other boaters
- Erodes shoreline and releases phosphorus which feeds algae
- Damages property including docks
- Harms nesting birds such as loons

The farther wake is from the shore, the less harm it causes.

**Lake Pennesseewassee  
Wake Zones and Depth Map**

**Legend**

- Depths (ft)
- 200 ft Zone - No Wakes
- 500 ft Zone - No Wakes Over 2 ft. High

0 0.25 0.5 1 Miles

## Save the Shoreline Respect "No Wake" Zones



200 ft. Zone - No Wake  
500 ft. Zone - No Wake Over 2 ft. High

**Why Wake Matters:**

- Hazardous to swimmers and other boaters
- Erodes shoreline and releases phosphorus which feeds algae
- Damages property including docks
- Harms nesting birds such as loons

The farther wake is from the shore, the less harm it causes.

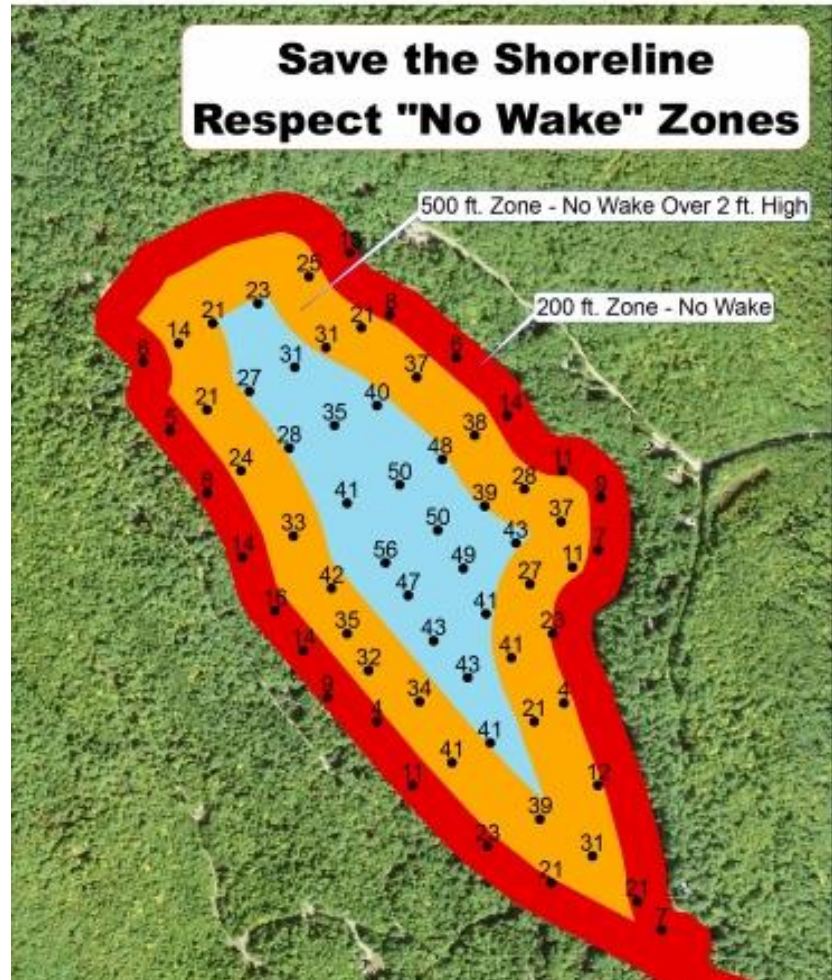
**North Pond  
Wake Zones and Depth Map**

**Legend**

- Depths (ft)
- 200 ft Zone - No Wakes
- 500 ft Zone - No Wakes Over 2 ft. High

0 0.075 0.15 0.3 Miles

## Save the Shoreline Respect "No Wake" Zones



500 ft. Zone - No Wake Over 2 ft. High  
200 ft. Zone - No Wake

**Why Wake Matters:**

- Hazardous to swimmers and other boaters
- Erodes shoreline and releases phosphorus which feeds algae
- Damages property including docks
- Harms nesting birds such as loons

The farther wake is from the shore, the less harm it causes.

**Sand Pond  
Wake Zones and Depth Map**

**Legend**

- Depths (ft)
- 200 ft Zone - No Wakes
- 500 ft Zone - No Wakes Over 2 ft. High

0 0.05 0.1 0.2 Miles





# Wake Zone & Depth Maps

- For the 3 lakes that have boat wake issues
- Map in holders at Lake Penn & North Pond (awaiting Sand Pond location)
- Have 8 ½ x 11 laminated copies for boaters at
  - Norway Marina
  - White's Marina



# Outreach (Susan Jacoby)





# Music & Art Show



love where you live

KEEPING OUR LAKES HEALTHY

come learn

COURTESY INSPECTOR  
MADE  
MILFORD  
PROJECT

come help

**Look Out For Loons!**  
Only over the lake safe for wildlife. Keep loons at a distance!  
• Stay Away From Loons on the Water  
• Avoid Nesting Areas  
• Retrieve All Fishing Line and Tackle  
• Use Lead-Free Sinkers and Jigs  
Loons are protected under state and federal law. If you see any other disturbing loon please call the Dept. of Inland Fisheries and Wildlife at 207-287-8300.  
MAINE AUDUBON

**WHAT IS THE BIGGEST THREAT TO OUR LAKES?**  
THESE PHOTOS ONLY SHOW A SMALL NUMBER OF LOCAL EROSION PROBLEMS AND SOLUTIONS.  
TALK WITH LAON MEMBERS NOW ABOUT HOW WATER FLOWS THRU YOUR PROPERTY.  
WE HAVE A LOT MORE DETAILED INFORMATION AT OUR TABLE.  
LET'S ALL WORK TOGETHER TO PRESERVE:  
-OUR LAKES  
-THE VALUE OF OUR PROPERTIES  
-THE ECONOMIC BASE OF OUR COMMUNITY  
QUIZ  
HOW MANY WATERS COURSE IN A BODY OF WATER?  
1) 1000  
2) 100  
3) 10  
4) 1  
A. 1000  
B. 100  
C. 10  
D. 1

**HOW CAN WE LIMIT POLLUTED RUNOFF FROM ENTERING OUR LAKES?**  
WE CAN LIMIT POLLUTED RUNOFF FROM ENTERING OUR LAKES BY:  
-Installing a stormwater management system  
-Planting native plants and trees  
-Using mulch  
-Using permeable pavement  
-Using a rain barrel  
-Using a rain garden  
-Using a rainwater harvesting system  
-Using a rainwater infiltration system  
-Using a rainwater storage system  
-Using a rainwater filtration system  
-Using a rainwater treatment system  
-Using a rainwater disinfection system  
-Using a rainwater distribution system  
-Using a rainwater collection system  
-Using a rainwater storage tank  
-Using a rainwater storage cistern  
-Using a rainwater storage tank  
-Using a rainwater storage cistern

**LAON**  
We are a volunteer non-profit community organization that works to protect and preserve the beauty of Maine's lakes and streams. We are currently seeking members and sponsors. Please consider becoming a member or a sponsor.

FESTIVAL SPECIAL  
Join LAON today & receive the book for FREE  
Or purchase for \$5.00  
The Lake Book

**Look Out For Loons!**  
Help keep this lake safe for wildlife. Enjoy loons!  
• Stay Away From Loons on the Water  
• Avoid Nesting Areas  
• Retrieve All Fishing Line and Tackle  
• Use Lead-Free Sinkers and Jigs  
Loons are protected under state and federal law. If you see any other disturbing loon please call the Dept. of Inland Fisheries and Wildlife at 207-287-8300.  
MAINE AUDUBON  
For more information:  
The Maine Loon Project  
20 Colchester Farm Road  
Colchester, ME 04428  
207-791-2320  
www.maineaudubon.org





# Length of the Lake Swim

Sunday August 20th 8am

8th ANNUAL

Pennesseewassee Park, Norway

3.5 mile swim honoring Norway's Enid Dullea, who swam the length of the lake daily training for the 1936 Olympics. Swimmers must wear a visible float and be accompanied by kayak or canoe. Wetsuits and fins are allowed. Not a timed event, swim safely for fun solo or as a team. Weather conditions permitting. FMI 617.833.0646

\$20 suggested donation benefits  
The Lakes Association of Norway

*Pennesseewassee Lake by Vivian Akers*





## Polling Question 8 (Length of the Lake Swim)

8. Would you like to support the Length of the Swim event?
- a) Yes, as a swimmer (can be teams)
  - b) Yes, as a safety boater
  - c) No



What you do: It's easy to get complacent  
See "Keep lakes healthy" on our website  
([www.norwaylakes.org](http://www.norwaylakes.org)) for water test results, boating and erosion  
control suggestions.

## Lakes Association of Norway

WHO WE ARE

SUPPORT

KEEP LAKES HEALTHY

OUR AREA

CONTACT US

### Who We Are

**LAON is an all-volunteer group** and Lake Pennesseewassee. We encourage responsible recreation, a

**Of course, the key to our lakes** plants and debris from all boats a wake within 200' of land).

Our **members enjoy** swimming, boating, fishing and other water sports during the summer and ice fishing, snowmobiling, cross country skiing and skating on the lakes all winter.

Events

WATER QUALITY INFORMATION

WAKE ZONE & DEPTH MAPS

WATERSHED PROGRAM

PREVENTING INVASIVE SPECIES

HOW BOATERS CAN HELP

HOMEOWNER TOOLKIT

LAKE SMART

**health and beauty of Norway's four lakes:** Sand Pond, Hobbs Pond, North Pond  
invasive plants and pollutants, monitor and report on each lake's condition, en-  
renewal campaign to reach our entire watershed community.

**r members:** Controlling erosion on their properties and roads. Removing all  
to protect other people, our shoreline, and property (state law requires minimum





# Polling Question 9– Website management

9. Will you be able to help manage LAON's website?

a). Yes

b). No

c). Maybe



# Financial Snapshot

- Financial condition is stable
- Dues/donations are on target
- Increased water quality testing costs (higher costs + Hobbs Pond special testing)
- \$10,000 for Watershed Protection Program
- CBI expenses to increase because of increased minimum wage and tight job market
- No Invasive plant survey expenses in 2021 or 2022 (Covid and Injury)
- Invasive plant survey expense to increase:  
2023 (\$8,000) and 2024 (\$10,500)





# 2023 REVENUE

		JANUARY 1, 2023	JULY 14, 2023
<b>Norway Savings Bank Balance</b>		<b>\$ 154,378.04</b>	<b>\$ 176,407.37</b>
<b>Revenue</b>		<b>PROJECTED</b>	<b>JULY 14, 2023 STATUS</b>
	Individual Contributions	22,000.00	19,199.00
	Sponsorships	3,000.00	2,175.00
	Town Payment	12,000.00	-
	Grants	7,633.00	3,493.00
	Amazon Smile	192.50	192.50
	Merchandise Sales	100.00	25.00
<b>Operating Fund Revenue</b>		<b>\$ 44,925.50</b>	<b>\$ 25,084.50</b>





# 2023 EXPENDITURES/ FUND BALANCES

EXPENDITURES		PROJECTED		JULY 14, 2023 STATUS
	Water Quality Testing		14,150.00	1,357.00
	2023 Invasive Plant Survey	8,000.00		
	2023 Water Quality Analysis	6,150.00		
	Boat Inspections		14,300.00	118.28
	Buoy Placement & Removal		700.00	399.00
	Watershed Remediation		10,000.00	-
	Outreach		2,500.00	774.00
	Administrative		500.00	387.90
	Merchandise for Resale		100.00	18.99
	Other Expenditures		-	-
	<b>Total Expenditures</b>		<b>\$ 42,250.00</b>	<b>\$ 3,055.17</b>
			<b>PROJECTED</b>	<b>STATUS</b>
			<b>DECEMBER 31, 2023</b>	<b>JULY 14, 2023</b>
	<b>Norway Savings Bank Balance</b>		<b>\$ 157,053.54</b>	<b>\$ 176,407.37</b>
	<b>FUND BALANCES</b>			
	Watershed Remediation Fund		9,339.76	9,339.76
	Water Quality Test Equipment Fund		\$6,000.00	6,000.00
	Water Quality Emergency Remediation Fund		\$25,000.00	25,000.00
	<b>Operating Fund Balance</b>		<b>\$ 116,713.78</b>	<b>\$ 139,560.61</b>



# AmazonSmile

- Gone.
- Thanks for participating



# Nominate & Elect Officers

- Sal Girifalco – President
- Jim O'Brien – Vice President
- Tom Webster – Treasurer
- Paul Shook – Secretary
  
- Other Candidates??? Please “Chat” and “Raise Hand”



Please email any suggestions on the meeting.  
We want to fit your needs.

Be Well  
Stay Safe  
Have a Great Summer