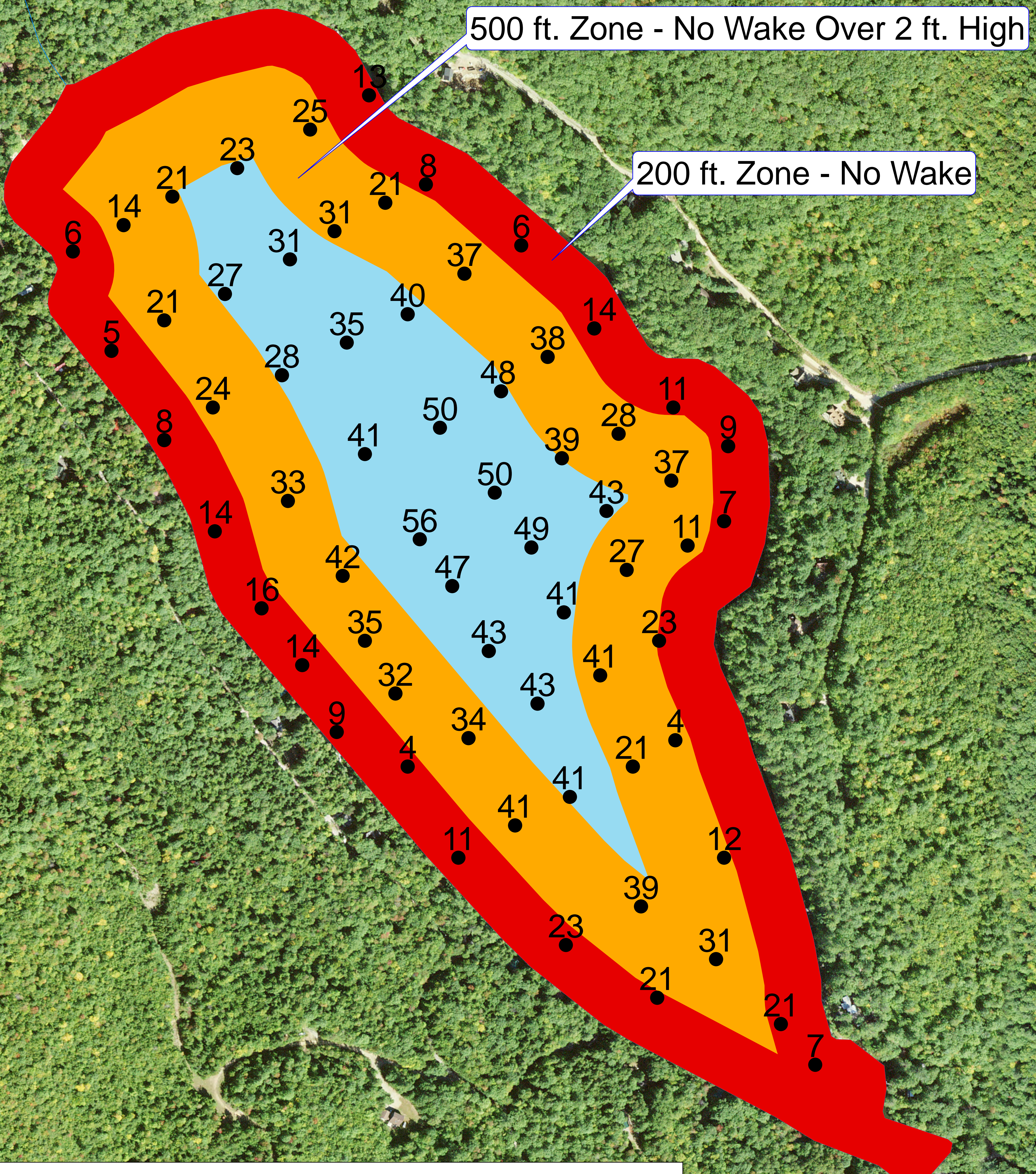


Save the Shoreline Respect "No Wake" Zones



Why Wake Matters:

- Hazardous to swimmers and other boaters
- Erodes shoreline and releases phosphorus which feeds algae
- Damages property including docks
- Harms nesting birds such as loons

The farther wake is from the shore, the less harm it causes.

Sand Pond Wake Zones and Depth Map

● Depths (ft)

■ 200 ft Zone - No Wakes

■ 500 ft Zone - No Wakes Over 2 ft. High

0 0.05 0.1 0.2 Miles

